

RIO DE JANEIRO 2009

Mirror Systems

RIO DE JANEIRO 2009

CITY TOWER IN FRONT OF COPACABANA BEACH
competition

The program consists of arranging multiple observation decks in a tower on the island of Cotunduba, off the coast of Rio de Janeiro. The assumed orientation of the tower is towards Copacabana Beach.

The tower includes auditoriums, bar, restaurant, foyers and a multiple use salon.

The expectation is that the tower becomes a welcoming symbol to people arriving in Rio de Janeiro by sea and air.

THE DISTILLATION OF BRAZILIAN MODERNISM FOR THE PURPOSES OF ORGANIZING ARBITRARY OPENINGS ACCORDING TO THE REFLEXIVE CANONS OF ARCHITECTURE EXALTED BY THE DYNAMIC COSMOPOLITAN SOCIETIES OF THE SOUTHERN HEMISPHERE IN WAITING. BENIGN CONDITIONS EVAPORATE IN THE WINDS CREATED BY RAPID VELOCITY DISPLACEMENT

The project is a dedicated homage to Brazilian Modernism. In this project Brazilian Modernism is distilled into the following essences,

- 1 the dramatic and oblique lines of society in action
- 2 the cosmic and figural curves of Niemeyer's sketches
- 3 the radiance of flashing mosaics
- 4 the concrete of the new metropolis
- 5 tabula rasa as witnessed by a low flying architect
- 6 the spiral stairs of the glimmering and weightless Palácio da Alvorada
- 7 archetypes of platonic faith
- 8 during the construction of the *centro social SESC pompééia* an Architect dressed as Catwoman directed the demolition workers towards the creating of new and arbitrary openings

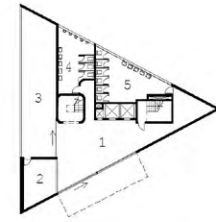


FRAGMENT 4: LEVEL +89.00

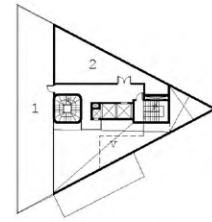


RIO DE JANEIRO 2009

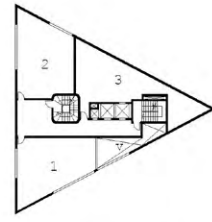
Mirror Systems



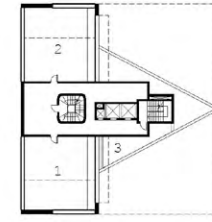
FRAGMENT 1: LEVEL +0.00
 1 Entry Foyer 57sqm
 2 Office 39sqm
 3 Shop 60sqm
 4 Male Toilets 23sqm
 5 Female Toilets 30sqm
 Circulation 46sqm
 scale 1:500 @ A2
 0 5 10M



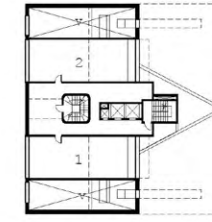
FRAGMENT 1: LEVEL +8.00
 1 Administration 80sqm
 2 Storage 40sqm
 v Void to below
 Circulation 50sqm



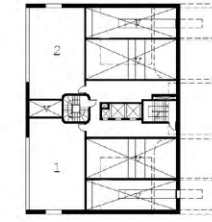
FRAGMENT 1: LEVEL +16.00
 1 Private Terrace 50sqm
 2 Private Terrace 50sqm
 3 Storage 54sqm
 v Void to below
 Circulation 60sqm



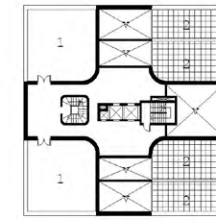
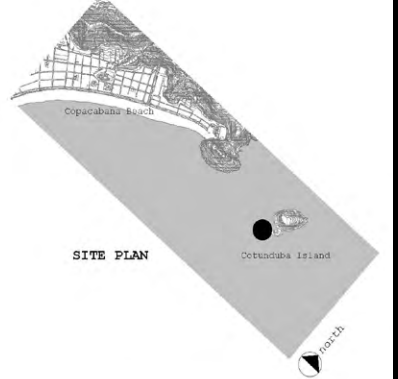
FRAGMENT 2: LEVEL +32.00
 1 Private Terrace 55sqm
 2 Private Terrace 55sqm
 3 Rooflight to below
 Circulation 85sqm



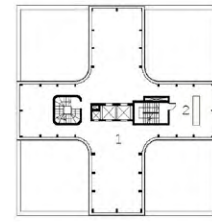
FRAGMENT 2: LEVEL +36.50
 1 Private Terrace 50sqm
 2 Private Terrace 40sqm
 Circulation 85sqm



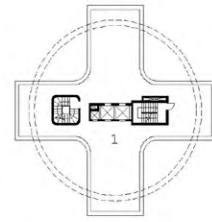
FRAGMENT 2: LEVEL +42.80
 1 Private Terrace 60sqm
 2 Private Terrace 58sqm
 v Void to below
 Circulation 70sqm



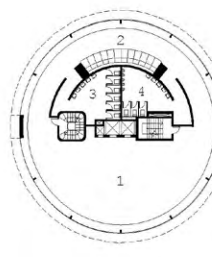
FRAGMENT 3: LEVEL +47.70
 1 Bar Terrace 116sqm
 2 Rooflight to below
 v Void to below
 Circulation 116sqm



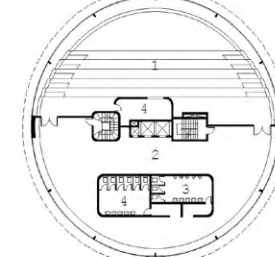
FRAGMENT 3: LEVEL +52.55
 1 Bar 160sqm
 2 Bar Service 30sqm
 Circulation 30sqm



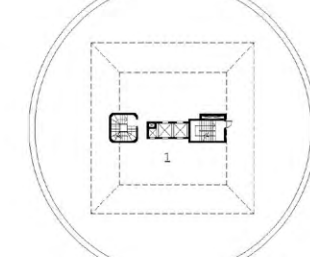
FRAGMENT 3: LEVEL +70.40
 1 Public Terrace 190sqm
 Circulation 30sqm



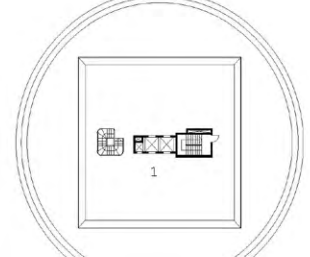
FRAGMENT 4: LEVEL +77.73
 1 Multiple Use Salon 220sqm
 2 Seating 45sqm
 3 Female Toilets 30sqm
 4 Male Toilets 30sqm
 Circulation 160sqm



FRAGMENT 4: LEVEL +84.43



FRAGMENT 4: LEVEL +89.00
 1 Public Terrace 690sqm
 Circulation 30sqm



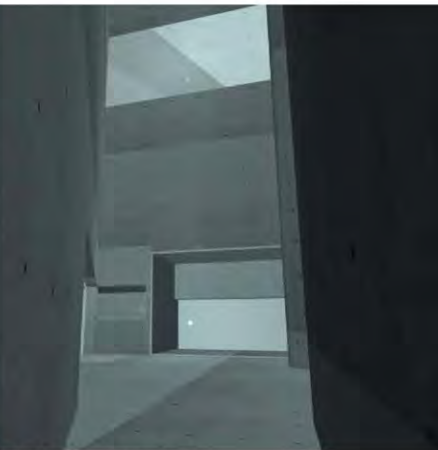
FRAGMENT 5: LEVEL +92.80
 1 Public Terrace 240sqm
 Circulation 30sqm



FRAGMENT 2: LEVEL +32.00



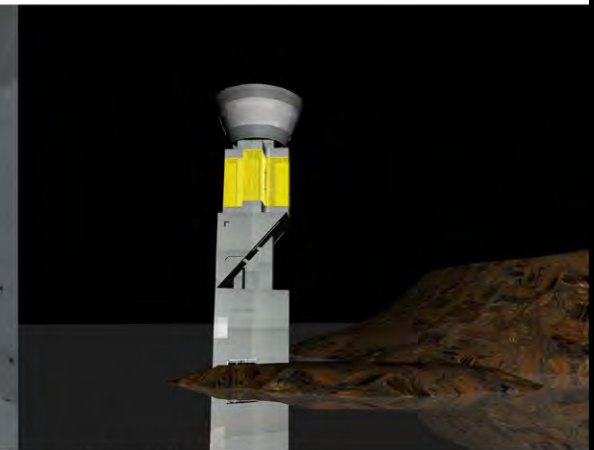
FRAGMENT 3: LEVEL +70.40



FRAGMENT 1: LEVEL +0.00



FRAGMENT 2: LEVEL +36.50



SOUTH EAST ELEVATION

